



Mechanically lined pipes – the GluBi® pipe

BUTTING has developed a glue bonded mechanically lined pipe that can be laid using the reel-lay process, without using inner pressure or increasing the wall thickness of the corrosion-resistant liner: the GluBi® pipe!

The principle behind the pipe is very innovative: The basis is a mechanically lined BuBi® pipe, which is provided with an additional special adhesive between the carbon-manganese steel and the corrosion-resistant liner.

Technical details at a glance:

- Sizes range from OD 168.3 mm (6") to OD 457.2 mm (18")
- High corrosion resistance at the inside and high pressure resistance at the outside
- Produced in accordance with API and DNV
- Suitable for all laying methods, economical for reeling and J-Lay processes

Benefits of GluBi® pipes:

- A wide range of materials and combination options
- High corrosion resistance at the inside and high pressure resistance at the outside
- Can be laid using Reel-Lay process, without internal water pressure or increased liner thickness
- Reduced laying costs and potential to save material costs
- Low installation costs compared to BuBi® pipes



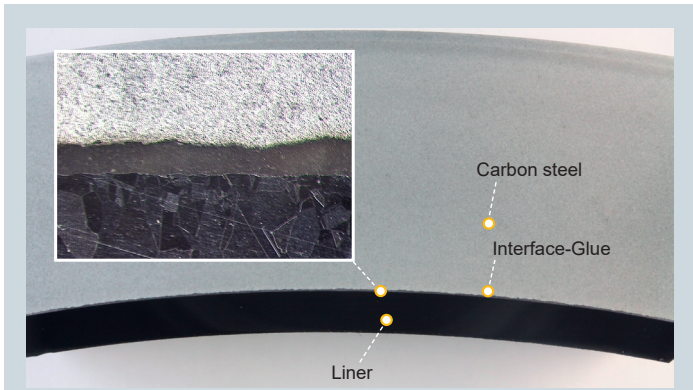


Fig. 1: Principle of a GluBi® pipe (metallographic cross section)

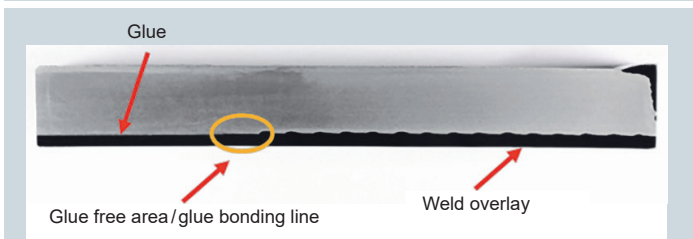
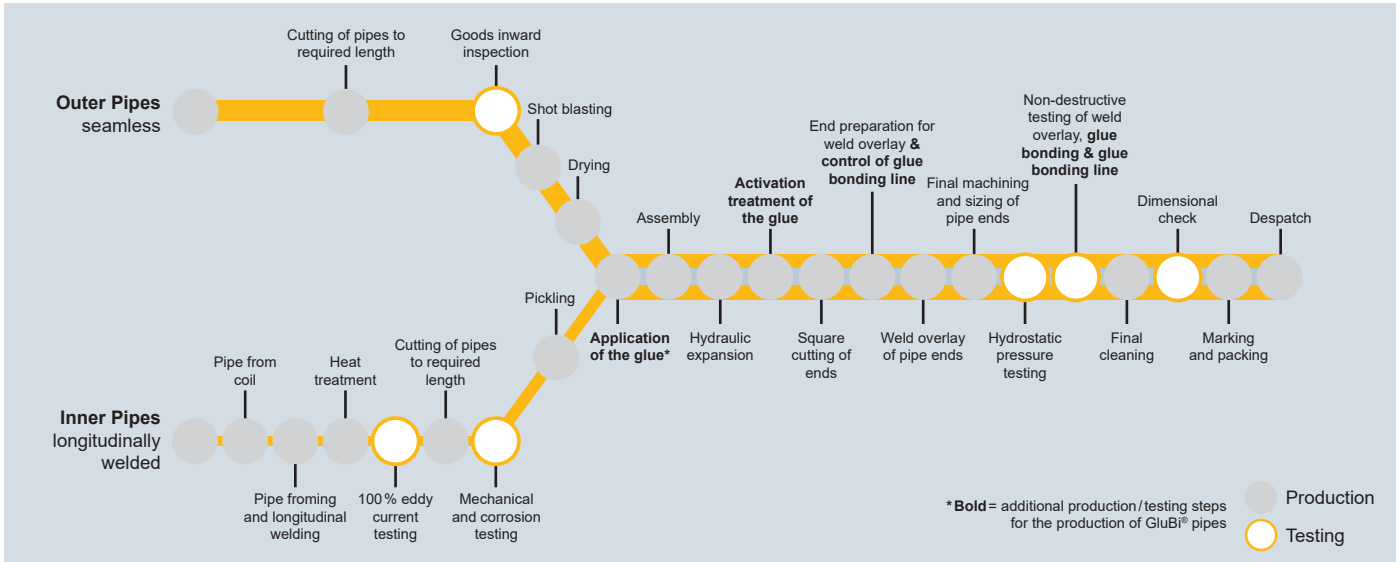
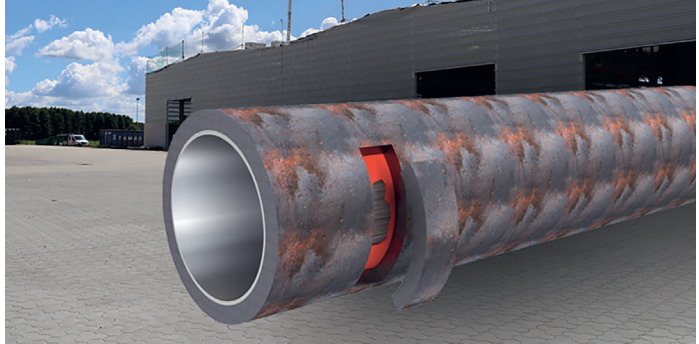


Fig. 2: Pipe end configuration incl. glue free area (metallographic cross section)



Manufacturing route of mechanically lined BuBi® & GluBi® pipes

Foto: gulfarm/istockphoto.com

Your proven specialist for innovative product solutions

BUTTING is one of the world's leading processors of stainless steels. The range of services includes welded stainless steel pipes, customised components as well as piping components and vessels. Its core competences lie in forming, welding and material grade technology. The company's headquarters are located in Knesebeck (Germany). Other production facilities are in Schwedt and Könnern (both in Germany) and in Tieling (China). More than 1 900 employees worldwide process over 80 000 metric tonnes of stainless steel and clad materials each year.